



**MOSQUITO and VECTOR MANAGEMENT DISTRICT
of SANTA BARBARA COUNTY**

DISEASE SURVEILLANCE REPORT

September 2023

Santa Barbara County Vector-borne Disease Surveillance

Location	Date	Number of Mosquitoes	Type of Trap	# of Traps	Mosquitoes per Trap Night	Pools Submitted	WSW Virus Test Result
Ashley x Mountain Dr, 93108	9/7-9/8	10	EVS	5	2	0	--
UCSB/SBAirport Bluffs	9/7-9/8	144	EVS	7	20.6	5	Negative
El Colegio x Los Carneros, Isla Vista	9/7-9/8	95	EVS	2	47.5	3	Negative
Mission Creek	9/6-9/11	475	Gravid	3	31.7	10	Negative
Lake Los Carneros	9/13-9/14	147	EVS	12	12.25	2	Negative
Lake Los Carneros	9/13-9/15	25	Gravid	2	6.25	2	Negative
UCSB/SBAir Bluffs	9/13-9/18	118	Gravid	2	11.8	4	Negative
A. Clark Bird Refuge, SB	9/19-9/20	79	EVS	6	39.5	3	Negative
Sycamore Creek, SB	9/19-9/20	24	EVS	3	8	2	Negative
Phelps Creek, UCSB	9/19-9/20	38	EVS	3	12.7	3	Negative
Bird Refuge/Sycamore Creek	9/19-9/21	66	Gravid	2	16.5	2	Pending
El Estero Water Resource, 93103	9/19-9/21	66	Gravid	2	16.5	3	Pending
Crescent Dr., 93105	9/26-9/28	90	Gravid	4	11.25	3	Pending
Floradale Ave x Santa Ynez River, Lompoc	9/27-9/28	3	EVS	2	1.5	1	Pending
Carina Dr., Vandenberg Village	9/27-9/28	8	EVS	1	8	3	Pending
River Bend Park, Lompoc	9/27-9/28	5	EVS	3	1.7	2	Pending
Mission Hills CSD	9/27-9/28	10	EVS	1	10	1	Pending
Mission Hills CSD	9/27-9/28	20	Gravid	1	20	1	Pending
Clubhouse Rd., Vandenberg Village	9/27-9/28	23	EVS	3	7.7	1	Pending
Chino St., 93101	9/11-10/3	15	BGS2	2	0.7	0	--
UCSB Fire Station	9/19-10/3	32	BGS2	1	2.3	0	--
MVMD, Summerland	9/15-10/3	8	BGS2	1	0.4	0	--

BGS2=Biogents Sentinel 2 BGP=Biogents Pro EVS=encephalitis surveillance trap (CO²)
 WSW=West Nile Virus, St. Louis Encephalitis Virus, AND Western Equine Encephalitis

*Color indicates the virus-transmitting ability of some or all of the mosquito species caught in the traps:
 Purple = high (example: *Aedes aegypti*, *Culex tarsalis*); Aqua = moderate; Tan = low. For specific trap collection data, please email a request to: info@mvmdistrict.org

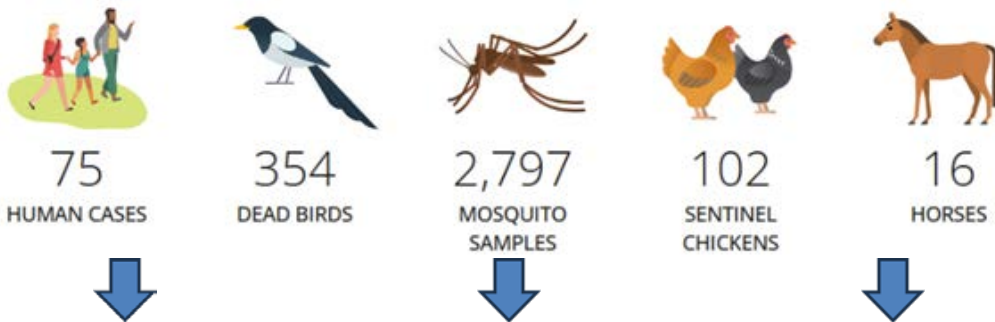
Two dead birds were reported in Santa Barbara County in September; one tested negative for WNV, and the other is still pending. To date, there has been no WNV activity in the County in 2023. St. Louis encephalitis virus and Western equine encephalitis virus have never been documented.

California Disease Surveillance

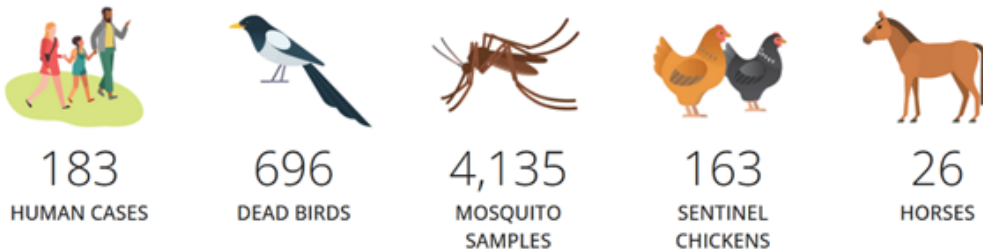
California West Nile virus detections continued to increase in September. As of September 29, WNV has been detected in 41 counties. There have been 183 human cases in 37 counties, and 73% of cases were neuro-invasive. Six human cases were fatal. Three human cases of Saint Louis encephalitis virus have been reported in CA in 2023; 615 SLE-positive mosquito pools have been reported in 15 counties. On October 13, the WNV dead bird program will switch to only online reporting and limited testing until April.

The CDPH Vector-Borne Disease Section 2022 Report is now available at <https://www.cdph.ca.gov/Programs/CID/DCDC/Pages/VBDSAnnualReports.aspx>

California WNV activity as of September 1, 2023



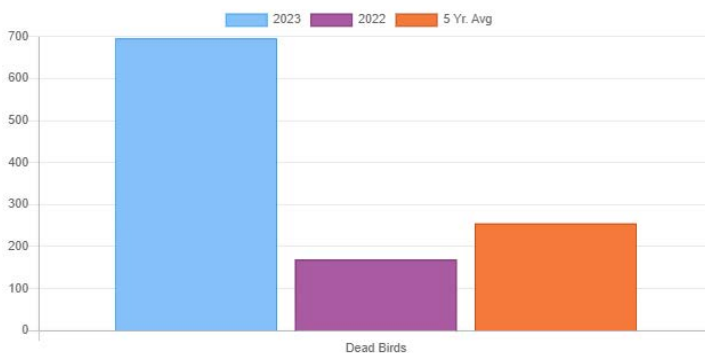
California WNV activity as of September 29, 2023



<https://westnile.ca.gov>

The number of CA birds testing positive for WNV has increased by 311% between 2022 and 2023, while the number of birds tested only increased by 50%.

WEEK 1 - WEEK 39 AS OF SEP 29, 2023



Invasive *Aedes* Mosquito and Zika Virus Update

No invasive *Aedes* species have been detected in Santa Barbara County since May of 2021. Once again, only *Culex* mosquito larvae were present in the 11 *Aedes aegypti*-targeting In2Care stations. *Aedes aegypti* are found in 25 California counties, and *Aedes albopictus* is found in five.

<https://westnile.ca.gov>

Mosquito Traps Used by the Mosquito District

MVMD Inventory October 2023

TRAP TYPE	INVENTORY	BAIT/SUPPLIES	COST OF OPERATION	POWER SOURCE
EVS OLD	14	DRY ICE (3.3LBS PER TRAP)	3.3LBS X \$4/LB=\$13.20	3 D BATTERIES
EVS NEW	3	DRY ICE (3.3LBS PER TRAP)	3.3LBS X \$4/LB=\$13.20	3 D BATTERIES
EVS UPGRADED	5	DRY ICE (3.3LBS PER TRAP)	3.3LBS X \$4/LB=\$13.20	3 D BATTERIES
EVS TO REPAIR	4			3 D BATTERIES
TOOLBOX GRAVID	2	ALFALFA, WATER, WATER-TIGHT BUCKET	\$10-\$40 PER YEAR	4 D BATTERIES
TOOLBOX GRAVID TO REPAIR	2			4 D BATTERIES
FROMMER GRAVID	3	ALFALFA, WATER, WATER-TIGHT BUCKET	\$10-\$40 PER YEAR	4 D BATTERIES
BG PRO	3	DRY ICE (3.3LBS EACH) AND/OR BG LURE		USB POWER BANK, 10000mAh PER 18 HOURS
BG SENTINEL 1	3	BG LURE (CO ₂ OPTIONAL)	\$50 PER LURE (REUSABLE FOR 5 MONTHS)	ELECTRICAL OUTLET
BG SENTINEL 2	10	BG LURE (CO ₂ OPTIONAL)	\$50 PER LURE (REUSABLE FOR 5 MONTHS)	ELECTRICAL OUTLET
OVICUPS	>50	CUP, WATER, PAPER	\$5-\$20 PER YEAR	NONE
BG-GAT (GRAVID AUTOCIDAL TRAP)	5	WATER, STICKY PANEL (28 IN STOCK)	\$2 PER DEPLOYMENT	NONE
CDC AGO (AUTOCIDAL GRAVID OVITRAP)	5	WATER, STICKY PANEL (39 IN STOCK)	\$2 PER DEPLOYMENT	NONE



Encephalitis Virus Surveillance (EVS) Trap

10 POUND CO ₂ Tank (NEW!)	1	use in place of dry ice in secure locations \$35 FOR 9 DAYS
POWER SOURCES		
RECHARGEABLE D BATTERIES 10,000 mAh	59	
RECHARGEABLE D BATTERIES 3,000 mAh	51	
D BATTERY CHARGERS	10 X 4 BATTERY SLOTS	
USB POWER BANK 30,000mAh	3	
USB POWER BANK 10,000mAh	1	



Frommer Gravid Trap



Toolbox Gravid Trap



BG Sentinel 2



BG Pro



In2Care Station



AGO traps catch the female invasive *Aedes* on a sticky surface as she enters to lay eggs

Ovi-cups are used to monitor invasive *Aedes* mosquito activity in an area by providing an ideal egg-laying habitat